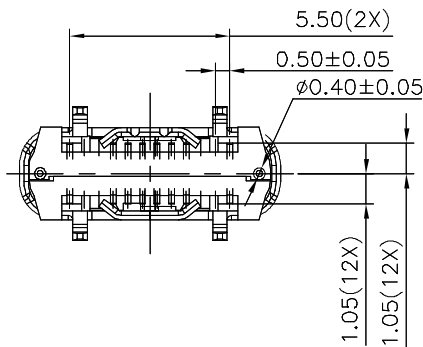
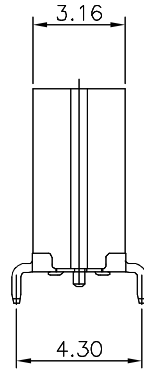
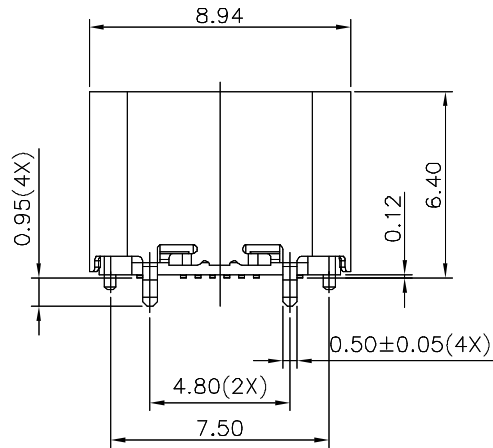
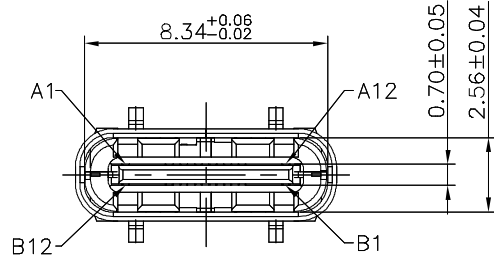


* RoHS COMPLIANT *



UNLESS OTHERWISE SPECIFIED, TOLERANCE ON DECIMAL: ±0.3

* REVISIONS

| LTR | DESCRIPTION | DATE | REVISED | APPROVED |
|-----|-------------|------|---------|----------|
| | | | | |

NOTE:

1.MATERIAL SPECIFICATION:

- 1.HOUSING:LCP,UL94 V-0.
- 2.TERMINAL: COPPER ALLOY(C1814)
- 3.MID PLATE: STAINLESS STEEL(SUS301)
- 4.FRONT SHELL: STAINLESS STEEL(SUS304)

2.PLATING SPECIFICATION:

2-1.TERMINAL:

- Ni 50u" MIN. UNDER PLATED OVER ALL.
- Au PLATED ON THE FUNCTIONAL AREA OF CONTACT.
- (GOLD PLATING THICKNESS FOLLOW THE P/N)
- PLATING SPECIFICATIONS OF THE SOLDER AREA FOLLOW THE P/N

2-2.FRONT SHELL:

- Ni 50u" MIN. UNDER PLATED OVER ALL.

2-3.MID PLATE:

- CLEAR ONLY

3.MECHANICAL PERFORMANCE,

- 3-1.INSERTION FORCE: 0.5~2.0kgf.
- 3-2.REMOVAL FORCE: 0.8kgf~2.0kgf.
- 3-3.DURABILITY: 10000 CYCLES.

4.ELECTRICAL PERFORMANCE,

- 4-1. VOLTAGE RATING:5 V DC/AC (RMS. max)
CURRENT RATING:5 AMPS. FOR TOTAL VBUS/GND PINS;
1.25AMPS FOR CC PIN,0.25 AMPS. FOR ALL OTHER CONTACT.
- 4-2. LLCR:
VBUS & GND PINS AND OTHER PINS: 40mΩ/PIN MAX.
SHIELD: 50mΩ/MAX.
LLCR MAX. CHANGE OF ALL PINS: 10mΩ.
- 4-3.INSULATION RESISTANCE: 100MΩ MIN
- 4-4.DIELECTRIC WITHSTAND VOLTAGE,AC 100V FOR 1 MINUTE.

5. ENVIRONMENTAL PERFORMANCE:

- OPERATING TEMPERATURE: -25°C~+85°C.

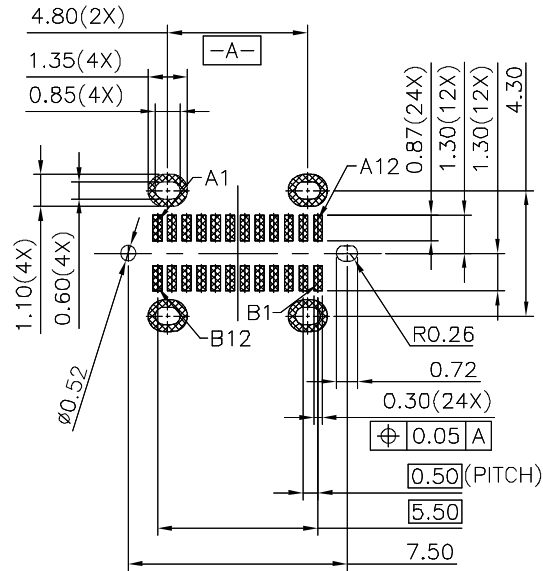
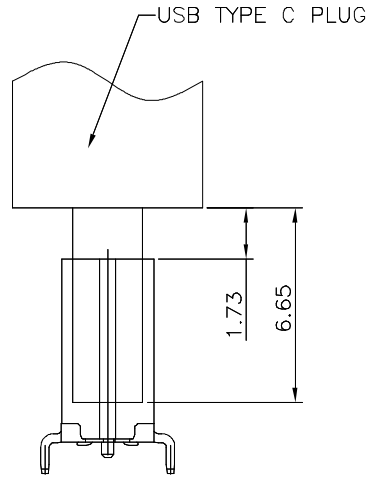
6.IR REFLOW:

- THE PEAK TEMPERATURE ON THE BOARD SHALL BE MAINTAINED FOR 10 SECONDS AT 260°C.

| | | | | | | |
|----------------------------|------|------|------------|----------------------|----------|----------------------|
| DWN | LILY | DATE | 2020.10.21 | 3RD ANGLE PROJECTION | NAME | USB TYPE C 短體6.4 直立式 |
| CHKD | ANDY | DATE | 2020.10.21 | | CAT. NO. | JCU-JDR-USCF048-S008 |
| APVD | JON | DATE | 2020.10.21 | UNIT: mm | DWN.NO. | KQ-JDR-USCF048-S008 |
| JKCR Electronics Co., Ltd. | | | | | | 001 |

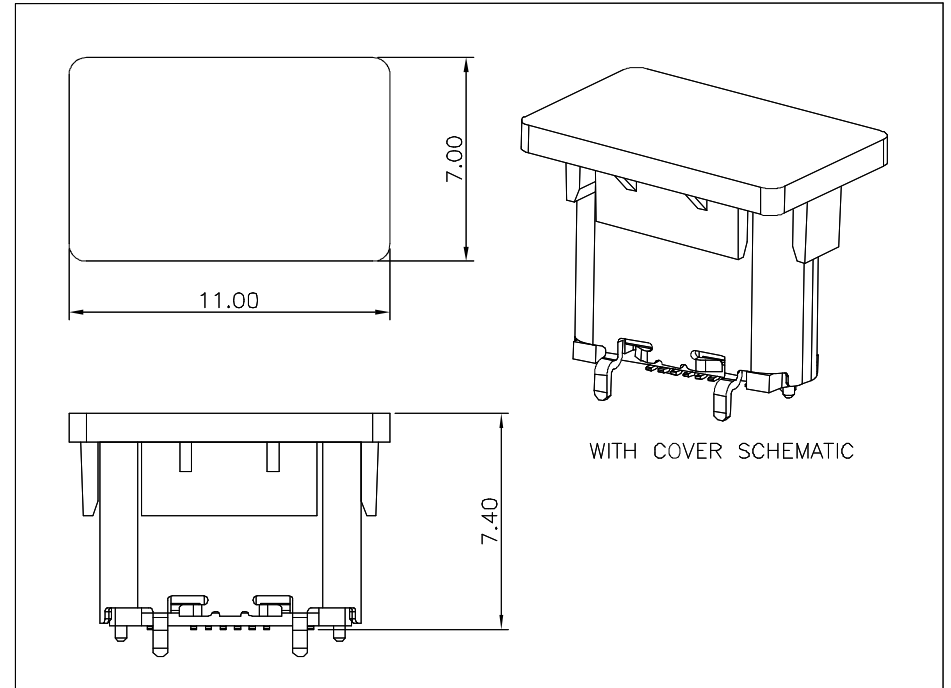
* RoHS COMPLIANT *

| * REVISIONS | | | | |
|-------------|-------------|------|---------|----------|
| LTR | DESCRIPTION | DATE | REVISED | APPROVED |
| | | | | |



FEMALE AND MALE MATCHING DRAWING

RECOMMENDED PCB LAYOUT(TOP VIEW)
THICKNESS 0.8±0.10MM;DEFAULT TOLERANCE:±0.05



USB TYPE-C PIN ASSIGNMENTS

| PIN NUMBER | SIGNAL NAME | PIN NUMBER | SIGNAL NAME |
|------------|-------------|------------|-------------|
| A1 | GND | B12 | GND |
| / | / | / | / |
| / | / | / | / |
| A4 | Vbus | B9 | Vbus |
| A5 | CC1 | B8 | SBU2 |
| A6 | Dp1 | B7 | Dn2 |
| A7 | Dn1 | B6 | Dp2 |
| A8 | SBU1 | B5 | CC2 |
| A9 | Vbus | B4 | Vbus |
| / | / | / | / |
| / | / | / | / |
| A12 | GND | B1 | GND |

UNLESS OTHERWISE SPECIFIED, TOLERANCE ON DECIMAL: ±0.3

| | | | | | | |
|----------------------------|------|------|------------|----------------------|----------|----------------------|
| DWN | LILY | DATE | 2020.10.21 | 3RD ANGLE PROJECTION | NAME | USB TYPE C 短體6.4 直立式 |
| CHKD | ANDY | DATE | 2020.10.21 | | CAT. NO. | JCU-JDR-USCF048-S008 |
| APVD | JON | DATE | 2020.10.21 | UNIT: mm | DWN.NO. | KQ-JDR-USCF048-S008 |
| JKCR Electronics Co., Ltd. | | | | | | 001 |